

# "Green Peace" Bobby Pin

As seen in the 2009 Spring Supplement



Created by: Amy Mickelson

## Suggested Materials:

| <u>Qty.</u> | <u>Stock #</u> | <u>Name</u>   |
|-------------|----------------|---|
| 1           | 30-822-1       | 2" bobby pin with 10mm pad for gluing, white                                    |
| 1           | 28-685-196     | 24mm ceramic peace sign bead, assorted colors                                   |
| 2           | 44-225-1       | 8mm peace sign charms, white  |
| 5           | 23-494-162     | 4mm Czech glass faceted firepolish rotund rondelles, fuchsia                    |
| 3           | 23-397-362     | 7mm thin Czech glass flower bead caps, green opal                               |
| 5           | 20-228-307     | Size 11 Toho® Japanese glass seed beads, light sapphire/light green color-lined |
| 3           | 37-415-1       | 1.5" thin head pins, white  |
| 1           | 37-422-1       | 2" standard head pin, white   |
| 3           | 37-136-1       | 5mm round jump rings, white   |

**Tools:** cutters, round-nose pliers, chain-nose pliers, adhesive such as Tenax™ Plus Super Glue (#60-240)

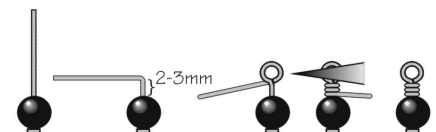
## To make this design:

1. Add the beads to head pins as pictured, and make wrapped loops. Use the 2" head pin on the ceramic bead, making the wrapped loop on the bottom of the peace sign.
2. Use jump rings to attach the peace sign charms and flower dangles to the loop at the bottom of the ceramic peace sign.
3. Follow the manufacturer's directions and glue the ceramic bead onto the pad of the bobby pin. (See gluing hints for metal findings on the back.)

**TIP:** Accessories such as hair decorations can be a great way for people to stay fashionable while spending less. Glue on your art focal and have a finished set that can sell for \$10-12.

## To make nice wire-wrapped beaded head and eye pins:

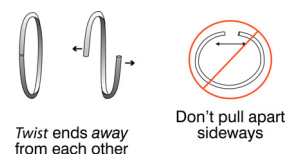
(For best results, use both chain-nose and round-nose pliers.)



1. Use chain-nose pliers to grasp the wire just above the top of the bead.
2. Use your fingers to bend the wire sharply over the top of the pliers, at a 90° angle. You should have 2-3mm of straight wire between the bead and the bend (less for fine-gauge wire, more for heavy wire or more wraps).
3. Use round-nose pliers to grasp a spot just above the bend, and use your fingers to smoothly bend the wire all the way around the tip of the pliers. (For different sizes of loops, bend the wire around thinner or thicker portions of the pliers' tip.)
4. Now use pliers to grasp the wire firmly across the loop. Use your fingers or chain-nose pliers to carefully wrap the wire around the stem. For best control, experts recommend you break this step into a series of half wraps.
5. Trim excess with flush cutters.

## Jump-ring hint:

When you open and close jump rings, twist sideways instead of "ovalling" them. This keeps their shape better, which makes them easier to close all the way.



## Gluing Hints for Metal Findings



1. Remember Murphy's Law! Before gluing or otherwise applying any chemical to every piece of your best customer's 1,000-piece order, we strongly recommend that you test the chemical(s) on a small sample of the goods.
2. Whenever possible, use a file to roughen smooth surfaces. This gives a stronger grip.
3. Clean both surfaces to be joined. We recommend using isopropyl alcohol and a cotton swab in a well-ventilated area.
4. Why is it important to clean the surfaces? During the manufacturing process, metal findings are coated with oil. They are degreased, but normally still have a small amount of oil left on the surface.
5. Follow each adhesive's directions carefully when using.
6. It's best if you can provide a dry, dust-free, well-ventilated environment when gluing. This helps assure a secure bond. Extreme temperatures might affect the drying time.
7. Store all adhesives in a cool place.
8. MSDS (Material Safety and Data Sheets) are available upon request for all glues that we sell.

### Metal Findings Pictured:

| <u>Stock</u> | <u>Name</u>   |
|--------------|---|
| #51-200-3    | Adjustable base metal disk rings, silver plate                      |
| #40-347-9    | 7.2" disk-and-loop bracelet forms for gluing, gunmetal              |
| #41-890-09-1 | 25x9x8mm Aanraku™ large bails, white                                |
| #41-791-01-3 | Small tube-top bails for gluing, silver plate                       |
| #30-822-1    | 2" bobby pins with 10mm smooth-surfaced round pad for gluing, white |

### Recommended Adhesives:

| <u>Stock</u> | <u>Name</u>             |
|--------------|-------------------------|
| #60-230      | Epoxy 330               |
| #60-260      | E-6000                  |
| #60-290      | Hammerhead Epoxy Cement |