

“Starry Starry Night” Necklace

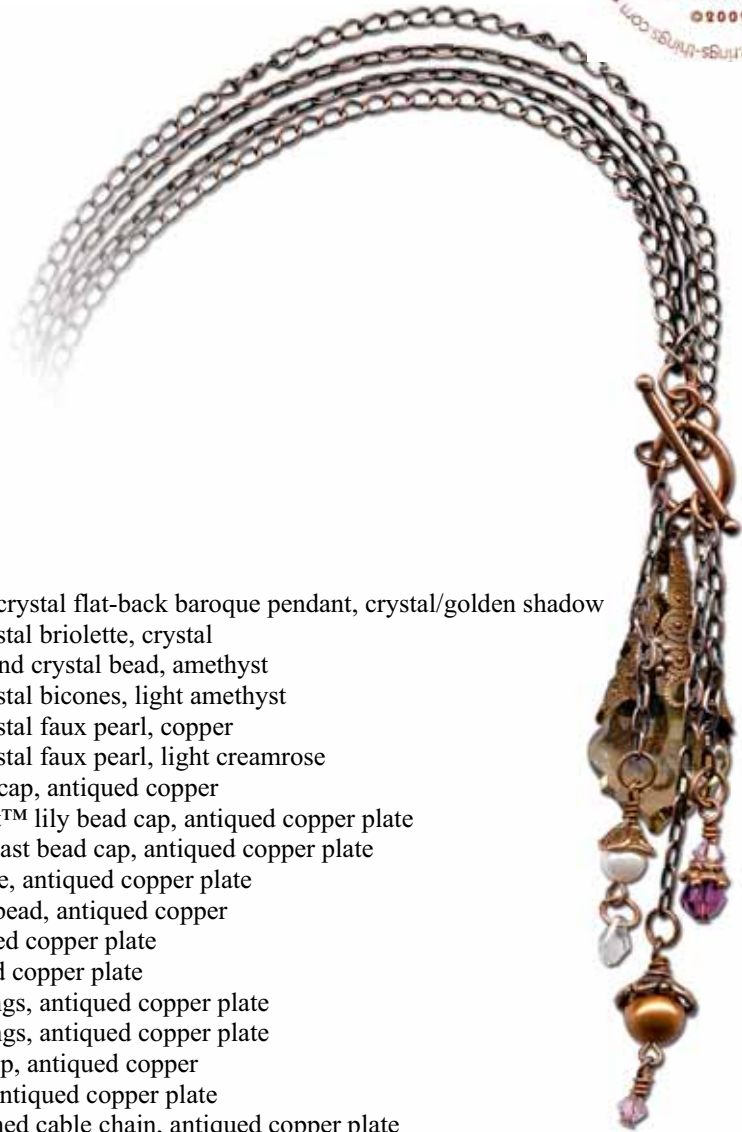
As seen in the Rings & Things Wholesale Catalog 2009-10



Created by: Mollie Valente

Suggested Materials:

<u>Qty.</u>	<u>Stock #</u>	<u>Name</u>
1	06-091-38-150	38mm Swarovski® crystal flat-back baroque pendant, crystal/golden shadow
1	06-007-07-01	7mm Swarovski crystal briolette, crystal
1	05-000-06-08	6mm Swarovski round crystal bead, amethyst
2	05-301-04-09	4mm Swarovski crystal bicones, light amethyst
1	05-810-08-212	8mm Swarovski crystal faux pearl, copper
1	05-810-06-201	6mm Swarovski crystal faux pearl, light creamrose
1	43-148-03	11mm filigree bead cap, antiqued copper
1	43-125-AC	7x3.5mm TierraCast™ lily bead cap, antiqued copper plate
1	43-129-AC	5x3mm tiny TierraCast bead cap, antiqued copper plate
1	44-155-7	28mm square filigree, antiqued copper plate
1	26-812-000	5mm flower spacer bead, antiqued copper
3	37-422-7	2" head pins, antiqued copper plate
2	37-722-7	2" eye pins, antiqued copper plate
7	37-145-7	6mm round jump rings, antiqued copper plate
6	37-136-7	5mm round jump rings, antiqued copper plate
1	39-850-00	Teardrop toggle clasp, antiqued copper
24"	40-099-08-7	2.8mm curb chain, antiqued copper plate
30"	40-099-16-7	2.1mm drawn flattened cable chain, antiqued copper plate



Tools: round-nose pliers, chain-nose pliers, flat-nose pliers

How to make this design:

1. Use round-nose pliers to form the filigree square into a cone-shaped basket; hold the filigree square at an angle and gently bring opposite corners together; work gradually and gently to maintain the shape of the cone.
2. Place a copper flower spacer on a head pin and insert it through the hole of the flat-back baroque pendant so the flat back of the pendant faces the front.
3. Bend the head pin at a 90° angle upwards.
4. Slide the pendant into the cone, from the bottom up, hooking the flower spacer to the outside of the filigree.

5. Insert the tail of the head pin through the top back opening of the filigree and bend the tail into a decorative loop. (See figure 1).
6. Use a 6mm jump ring to attach this filigree crystal pendant to the loop of the toggle clasp.
7. Cut four pieces of 2.1mm drawn flattened cable chain: one 24", three 2".
8. Cut a 24" piece of 2.8mm curb chain.
9. Using 5mm jump rings, attach the two 24" pieces of chain to the loop of the toggle clasp.
10. Add the crystals, faux pearls and bead caps to head and eye pins and make wrapped loops, as pictured.
11. Using jump rings, attach the 3 pieces of 2" chain to the crystal dangles and the loop of the toggle.



figure 1

To make nice wire-wrapped beaded head and eye pins:

(For best results, use both chain-nose and round-nose pliers.)

1. Use chain-nose pliers to grasp the wire just above the top of the bead.
2. Use your fingers to bend the wire sharply over the top of the pliers, at a 90° angle. You should have 2-3mm of straight wire between the bead and the bend (less for fine-gauge wire, more for heavy wire or more wraps).
3. Use round-nose pliers to grasp a spot just above the bend, and use your fingers to smoothly bend the wire all the way around the tip of the pliers. (For different sizes of loops, bend the wire around thinner or thicker portions of the pliers' tip.)
4. Now use pliers to grasp the wire firmly across the loop. Use your fingers or chain-nose pliers to carefully wrap the wire around the stem. For best control, experts recommend you break this step into a series of half wraps.
5. Trim excess with flush cutters.

