

"Shades of Turquoise" Necklace

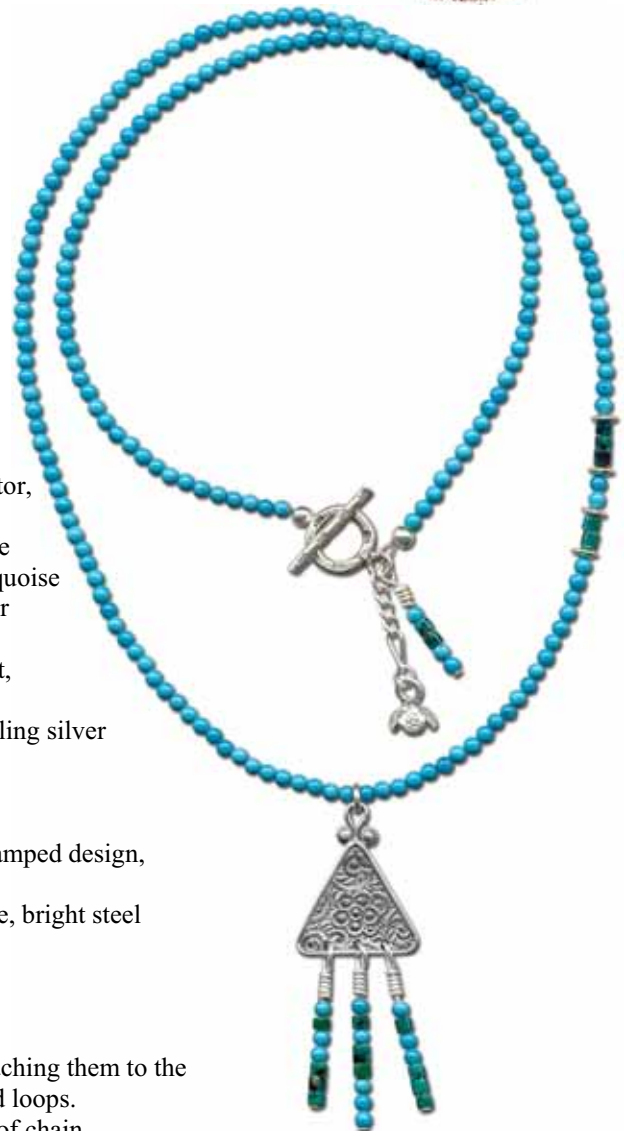
As seen in the Rings & Things Wholesale Catalog 2009-10



Created by: Ben Glass

Suggested Materials:

<u>Qty.</u>	<u>Stock #</u>	<u>Name</u>
1	49-952-51-3	21x16x1mm triangular floral charm connector, silver plate
1 strand	21-882-202	2mm round gemstone beads, block turquoise
18	20-470-05	1-2mm gemstone heishi beads, Chinese turquoise
4	24-731-746	3mm Bali flying saucer beads, sterling silver
4	37-512	2" thin head pins, sterling silver
1	44-050-87-33	Karen Hill Tribe flower drop charm pendant, .999 fine silver
1/2"	40-598	2.1mm fine long & short footage chain, sterling silver
3	37-295-130	3mm round jump rings, sterling silver
2	41-559	2x2mm crimp tubes, sterling silver
2	48-583	3mm crimp covers, sterling silver
1	39-553-A	Karen Hill Tribe round toggle clasp with stamped design, sterling silver
18"	61-810-49-87	0.015" 49-strand Beadalon® stringing cable, bright steel



Tools: cutters, round-nose pliers, flat-nose pliers

To make this design:

1. Add beads to head pins, as pictured, and make wrapped loops, attaching them to the triangular pendant and toggle clasp before completing the wrapped loops.
2. Use a jump ring to attach the flower drop pendant to the 1/2" piece of chain.
3. Attach the chain to the toggle clasp another jump ring.
4. Use the "Techniques for Stringing with Beading Cable" on the back, and string the remaining beads as pictured.
5. Use a jump ring to attach the pendant to the necklace.

To make nice wire-wrapped beaded head and eye pins:

(For best results, use both chain-nose and round-nose pliers.)

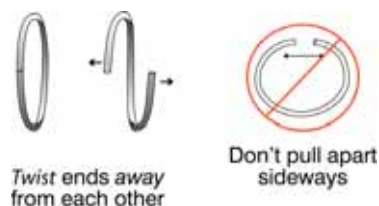
1. Use chain-nose pliers to grasp the wire just above the top of the bead.
2. Use your fingers to bend the wire sharply over the top of the pliers, at a 90° angle. You should have 2-3mm of straight wire between the bead and the bend (less for fine-gauge wire, more for heavy wire or more wraps).
3. Use round-nose pliers to grasp a spot just above the bend, and use your fingers to smoothly bend the wire all the way around the tip of the pliers. (For different sizes of loops, bend the wire around thinner or thicker portions of the pliers' tip.)
4. Now use pliers to grasp the wire firmly across the loop. Use your fingers or chain-nose pliers to carefully wrap the wire around the stem. For best control, experts recommend you break this step into a series of half wraps.
5. Trim excess with flush cutters.



Techniques for Stringing with Beading Cable

1. Cut wire cable 4" longer than desired necklace or bracelet length. String a crimp bead onto one end of the cable and loop back through crimp bead. Try to tuck excess cable inside your end beads, otherwise trim neatly with flush cutters. Flatten crimp bead with standard round- or flat-nose pliers. Use jump ring to attach one end of your clasp to cable.

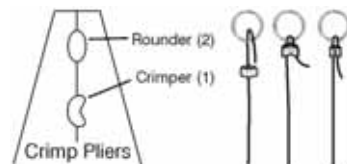
TIP: When opening and closing jump rings, twist sideways instead of "ovalling" them. This keeps their shape better, which makes them easier to close all the way. (As shown on the left.) To prevent marks on the ring use non-serrated flat-nose pliers.



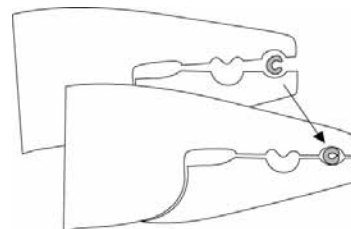
2. String desired pattern.
3. Add final crimp bead; loop cable back through your crimp like in step 1. Tuck excess cable inside end beads, otherwise trim neatly with flush cutters. Flatten crimp bead and attach other end of the clasp with a jump ring.
4. Some designs may require stringing the beads before finishing the cable ends. We recommend using Bead Stoppers™ (#69-144-06 and -16) to secure unfinished ends. When you have finished follow steps 1 and 3.

Variations:

- a. **Crimping pliers:** To make a nice rounded crimp bead, use the innermost section (1) of the pliers to crimp. Face crimp outward (as shown in example below) and use the outer section (2) of the pliers to round the bead.



- b. **Crimp covers:** Cover flattened crimps with a crimp cover. Make sure there is enough space around your crimp bead. Use section 2 (see picture above) of the crimping pliers to gently secure the cover over the bead.



- c. **Bullion:** Cut two pieces in precise equal lengths (approx. 1/2-3/4"), add one crimp tube and one piece of bullion to the end of wire cable. Loop the cable through one portion of clasp and back through the crimp tube. Pull gently until the bullion is flush against the crimp and crimp closed.



- d. **Wire protectors:** Guard wire cable from excessive wear with wire protectors. These are used the same way as bullion.

