

"Riddle" Earrings & Bracelet

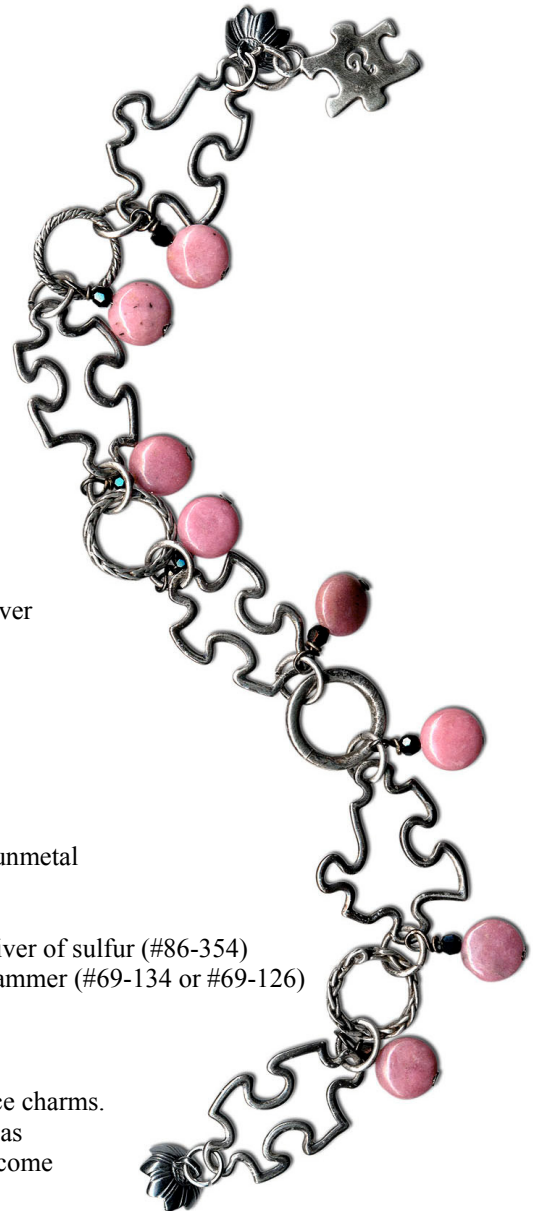
As seen in the Rings & Things Wholesale Catalog 2009-10



Created by: Amy Scalise, Mollie Valente

Suggested Materials:

<u>Qty.</u>	<u>Stock #</u>	<u>Name</u>
Earrings		
2	49-740	3-D puzzle piece charms, sterling silver
2	21-000-047-56	8mm puffed-coin gemstone beads, rhodonite
2	05-000-03-24	3mm faceted round Swarovski® crystal beads, jet
2	37-415-9	1.5" thin head pins, gunmetal
2	34-323-9	French hook ear wires, gunmetal
Bracelet		
1	49-740	3-D puzzle piece charm, sterling silver
2	44-050-90-40	Puzzle-piece links, sterling silver
2	44-050-90-41	Puzzle-piece links, sterling silver
1	44-050-90-42	Puzzle-piece link, sterling silver
8	37-295-670	7mm round jump rings, sterling silver
1	37-299-15	13mm wheat-weave patterned round link, sterling silver
1	37-299-16	12mm twisted round link, sterling silver
1	37-299-17	13mm braided round link, sterling silver
1	44-050-70-48	13mm round link, sterling silver
8	21-000-047-56	8mm puffed-coin gemstone beads, rhodonite
8	05-000-03-24	3mm faceted round Swarovski crystal beads, jet
8	37-415-9	1.5" thin head pins, gunmetal
2	37-136-5	5mm round jump rings, antiqued pewter
1	39-423-9	Flower-shaped magnetic clasp with zig-zag edges, gunmetal



Tools: cutters, round-nose pliers, chain-nose pliers, oxidizing solution such as liver of sulfur (#86-354) or WinOx™ (#86-343), Beaducation™ question mark design stamp, chasing hammer (#69-134 or #69-126)

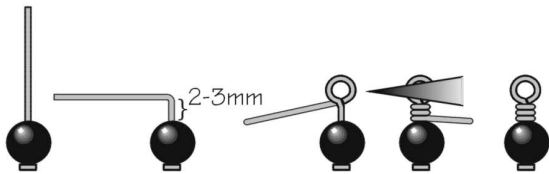
To make these designs:

1. Use a chasing hammer to stamp the question mark stamp on the puzzle piece charms.
2. Antique all the sterling silver components using an oxidizing solution such as liver of sulfur (#86-354) or WinOx (#86-343). Follow the instructions that come with the solution.
3. Add the crystals and gemstones to the head pins as pictured, and make wrapped loops. (See techniques for making wrapped loops on the back.)
4. For the earrings, connect the stamped puzzle charms and gemstone danglers to the earwires as shown.
5. For the bracelet, use the 7mm jump rings to connect the puzzle charm, sterling links and gemstone danglers. Attach the magnetic clasp using 5mm jump rings.

To make nice wire-wrapped beaded head and eye pins:

(For best results, use both chain-nose and round-nose pliers.)

1. Use chain-nose pliers to grasp the wire just above the top of the bead.
2. Use your fingers to bend the wire sharply over the top of the pliers, at a 90° angle. You should have 2-3mm of straight wire between the bead and the bend (less for fine-gauge wire, more for heavy wire or more wraps).
3. Use round-nose pliers to grasp a spot just above the bend, and use your fingers to smoothly bend the wire all the way around the tip of the pliers. (For different sizes of loops, bend the wire around thinner or thicker portions of the pliers' tip.)
4. Now use pliers to grasp the wire firmly across the loop. Use your fingers or chain-nose pliers to carefully wrap the wire around the stem. For best control, experts recommend you break this step into a series of half wraps.
5. Trim excess with flush cutters.



Jump-ring hint:

When you open and close jump rings, twist sideways instead of “ovalling” them. This keeps their shape better, which makes them easier to close all the way.

