

## "Lily Pad" Bracelet

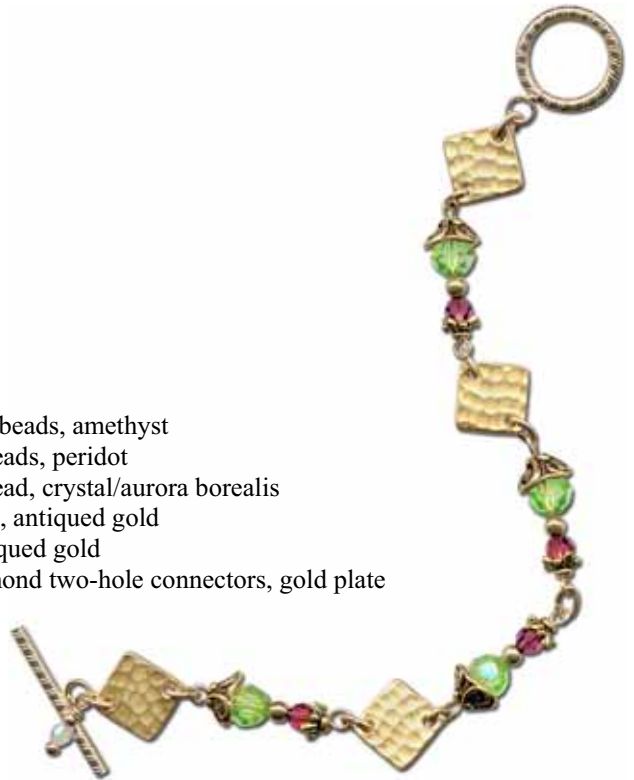
As seen in the Rings & Things Wholesale Catalog 2009-10



Created by: Amy Scalise

### Suggested Materials:

<u>Qty.</u>	<u>Stock #</u>	<u>Name</u>
4	05-000-04-08	4mm faceted round Swarovski® crystal beads, amethyst
4	05-000-06-15	6mm faceted round Swarovski crystal beads, peridot
1	05-000-03-02	3mm faceted round Swarovski crystal bead, crystal/aurora borealis
4	43-129-AG	5x3mm tiny TierraCast™ leaf bead caps, antiqued gold
4	43-125-AG	7x3.5mm TierraCast lily bead caps, antiqued gold
4	49-947-47-4	12mm TierraCast Hammertone flat diamond two-hole connectors, gold plate
4	24-999-04	4mm seamless round beads, gold fill
1	26-622	2mm round bead, gold fill
2	37-358	4.5mm oval jump rings, gold fill
9	37-326	3.5mm oval jump rings, gold fill
4	37-915	1.5" thin eye pins, gold fill
1	37-677	1" head pin with ball end, gold fill
1	39-652	Patterned round toggle clasp, gold fill



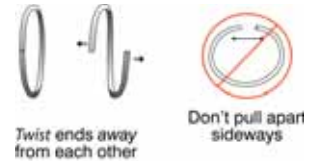
**Tools:** cutters, round-nose pliers, flat-nose pliers

### To make this design:

1. Add beads, crystals and bead caps to eye pins, as pictured, and make simple loops. (See the techniques for making loops on the back.)
2. Add the tiny 3mm crystal and 2mm gold filled bead to the head pin and make a wrapped loop.
3. Use oval jump rings to connect the crystal dangles (created in steps 1 and 2) to the two-hole diamond connectors and the toggle clasp. (See the jump-ring hint on the back.)

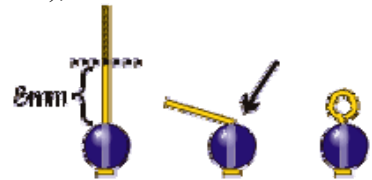
### Jump-ring hint:

When you open and close jump rings, twist sideways instead of “ovalling” them. This keeps their shape better, which makes them easier to close all the way.



### To make nice loops on head or eye pins:

1. String selected beads on the head or eye pin.
2. Keep about 8mm (1/3") of wire. Cut off any extra.
3. Use round-nose pliers to grasp the wire just above the bead (at the arrow), and bend sharply away from you.
4. Now use small round-nose pliers to grasp the tip of the wire, and bend it smoothly around the pliers down close to the beads.



### To make nice wire-wrapped beaded head and eye pins:

(For best results, use both chain-nose and round-nose pliers.)

1. Use chain-nose pliers to grasp the wire just above the top of the bead.
2. Use your fingers to bend the wire sharply over the top of the pliers, at a 90° angle. You should have 2-3mm of straight wire between the bead and the bend (less for fine-gauge wire, more for heavy wire or more wraps).
3. Use round-nose pliers to grasp a spot just above the bend, and use your fingers to smoothly bend the wire all the way around the tip of the pliers. (For different sizes of loops, bend the wire around thinner or thicker portions of the pliers' tip.)
4. Now use round-nose pliers to grasp the wire firmly across the loop. Use your fingers or chain-nose pliers to carefully wrap the wire around the stem. For best control, experts recommend you break this step into a series of half wraps.
5. Trim excess with flush cutters.

