

“Galactic Flower Charm” Set

As seen in the Rings & Things Wholesale Catalog 2009-10



Created by: Evette Rana

Suggested Materials:

<u>Qty.</u>	<u>Stock #</u>	<u>Name</u>
Earrings		
2	05-556-19-24	19mm Swarovski® crystal galactic beads, jet
2	02-300-16-01	16ss Swarovski mounted crystal rhinestones, crystal
2	37-591	2.5" thin head pins with filigree end, sterling silver
2	37-295-450	5mm round jump rings, sterling silver
2	37-295-560	6mm round jump rings, sterling silver
1 pair	32-539-01	12mm Celtic knot earring posts with nuts, sterling silver



Bracelet

1	05-556-27-24	27mm Swarovski crystal galactic bead, jet
32	05-000-05-24	5mm Swarovski round crystal beads, jet
2	24-980-26	4x6mm SmartBead rectangle tubes with BPS™*, sterling silver
2	39-550-X	Fancy flower toggle clasps, sterling silver
1	37-512	2" thin head pin, sterling silver
12"	61-810-49-87	0.015" 49-strand Beadalon® stringing cable, bright steel
6	41-554	1.5x2mm (size 1) crimp tubes, sterling silver
6	48-583	3mm crimp covers, sterling silver

Tools: round-nose pliers, flush cutters, crimping pliers, adhesive such as Bead Fix™ (#60-242)

To make these designs:

Earrings

1. Add crystals and rhinestones to head pins and make wrapped loops. (See techniques for making wrapped loops on the back.)
2. Attach to earring posts with jump rings.

TIP: Glue the mounted crystal rhinestone in place on the head pin so that it doesn't spin around.

Bracelet

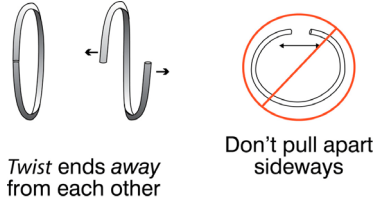
1. Use a head pin to attach the galactic crystal to the flower side of both toggle clasps. Cut off the head, add the crystal and make wrapped loops on each end. (See techniques for making wrapped loops on the back.)
2. Use the “Techniques for Stringing with Beading Cable” and string bracelet, as pictured, with the “T” of the toggle on each end.

* **NOTE:** BPS™ (Bead Positioning System) a gripping rubber gasket inside that allows the bead to be positioned and repositioned.

Techniques for Stringing with Beading Cable

1. Cut wire cable 4" longer than desired necklace or bracelet length. String a crimp bead onto one end of the cable and loop back through crimp bead. Try to tuck excess cable inside your end beads, otherwise trim neatly with flush cutters. Flatten crimp bead with standard round- or flat-nose pliers. Use jump ring to attach one end of your clasp to cable.

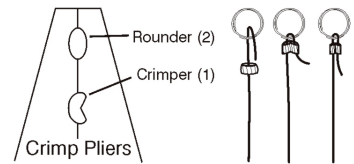
TIP: When opening and closing jump rings, twist sideways instead of "ovalling" them. This keeps their shape better, which makes them easier to close all the way. (As shown on the left.) To prevent marks on the ring use non-serrated flat-nose pliers.



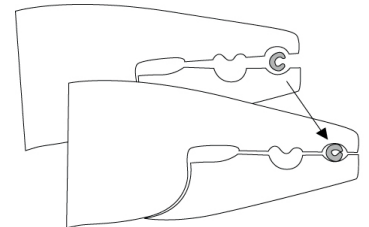
2. String desired pattern.
3. Add final crimp bead; loop cable back through your crimp like in step 1. Tuck excess cable inside end beads, otherwise trim neatly with flush cutters. Flatten crimp bead and attach other end of the clasp with a jump ring.
4. Some designs may require stringing the beads before finishing the cable ends. We recommend using Bead Stoppers™ (#69-144-06 and -16) to secure unfinished ends. When you have finished follow steps 1 and 3.

Variations:

- a. **Crimping pliers:** To make a nice rounded crimp bead, use the innermost section (1) of the pliers to crimp. Face crimp outward (as shown in example below) and use the outer section (2) of the pliers to round the bead.



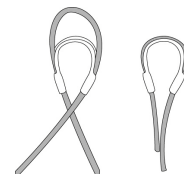
- b. **Crimp covers:** Cover flattened crimps with a crimp cover. Make sure there is enough space around your crimp bead. Use section 2 (see picture above) of the crimping pliers to gently secure the cover over the bead.



- c. **Bullion:** Cut two pieces in precise equal lengths (approx. 1/2-3/4"), add one crimp tube and one piece of bullion to the end of wire cable. Loop the cable through one portion of clasp and back through the crimp tube. Pull gently until the bullion is flush against the crimp and crimp closed.



- d. **Wire protectors:** Guard wire cable from excessive wear with wire protectors. These are used the same way as bullion.



To make nice wire-wrapped beaded head and eye pins:

(For best results, use both chain-nose and round-nose pliers.)

1. Use chain-nose pliers to grasp the wire just above the top of the bead.
2. Use your fingers to bend the wire sharply over the top of the pliers, at a 90° angle. You should have 2-3mm of straight wire between the bead and the bend (less for fine-gauge wire, more for heavy wire or more wraps).
3. Use round-nose pliers to grasp a spot just above the bend, and use your fingers to smoothly bend the wire all the way around the tip of the pliers. (For different sizes of loops, bend the wire around thinner or thicker portions of the pliers' tip.)
4. Now use pliers to grasp the wire firmly across the loop. Use your fingers or chain-nose pliers to carefully wrap the wire around the stem. For best control, experts recommend you break this step into a series of half wraps.
5. Trim excess with flush cutters.

