

“How to Marry a Millionaire” Necklace

As seen in the 2008 Fall Supplement



Created by: Josie Arndt

Suggested Materials:

<u>Qty.</u>	<u>Stock #</u>	<u>Name</u>
42	20-629-06-011	Tip-drilled keishi pearls, white
38	27-572-4	2mm round metal beads, gold plate
2	06-791-25-150	25mm Swarovski® 2-sprig coral pendants, crystal/golden shadow
1	06-790-40-150	40mm Swarovski 3-sprig coral pendant, crystal/golden shadow
2	37-113-2	4mm round jump rings, yellow
1	41-216-2	6mm split ring, yellow
20	41-256-01-4	1.3x1.4mm crimp tubes (size 1), gold plate
1	39-163-4	TierraCast™ Hammertone heart-shaped toggle clasp, gold plate
3	41-180-01-0	10x3x9mm folded engraved prong bails, tarnish-resistant brass
2	49-947-15-AG	15x5x4mm 3-D spindle shell charms, antiqued gold
17”	61-410-49-87	0.013” 49-strand Beadalon® stringing cable, bright steel

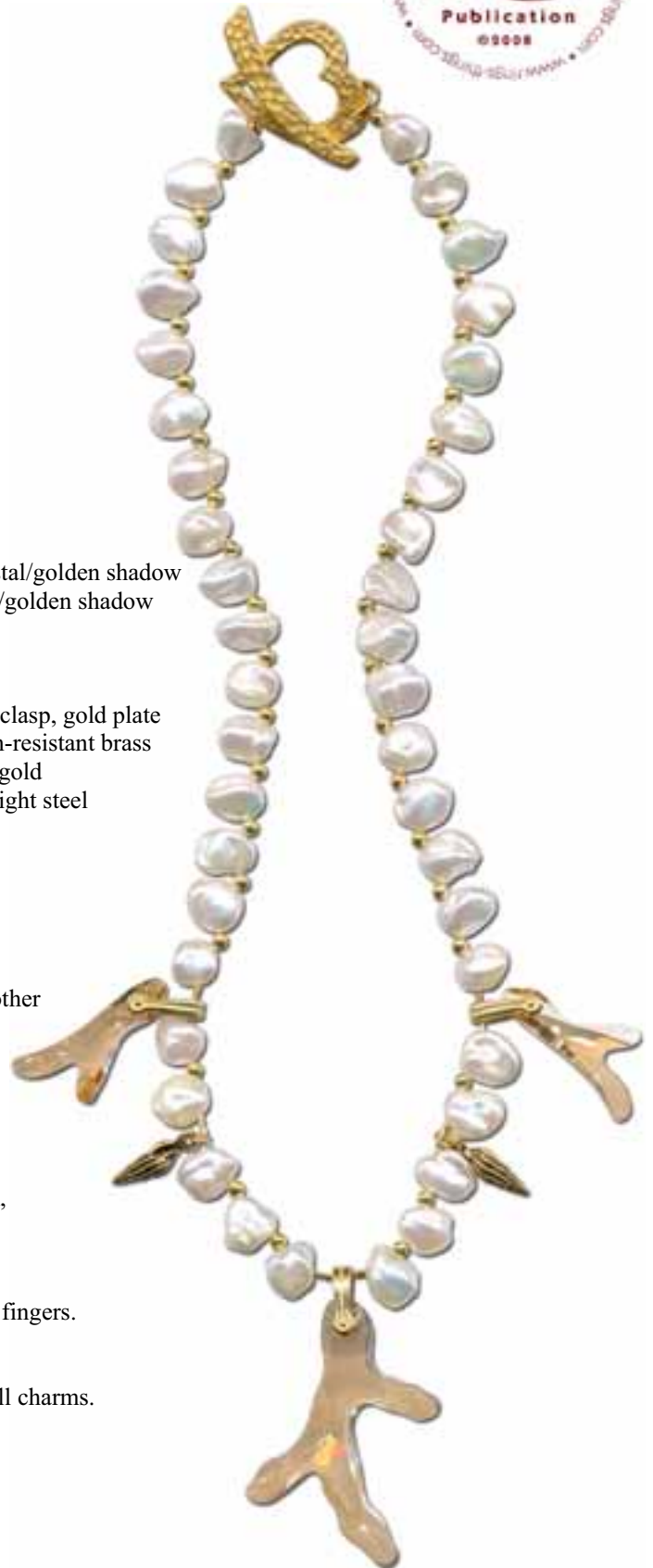
Tools: crimping pliers, flat-nose pliers, cutters

To make this design:

1. Use the pearls, beads and crystals from the suggested material list or other beads of your choosing.
2. Attach the shell charms to jump rings and set aside.
3. Attach the crystal coral pendants to the prong bails and set aside.
4. Using the “Techniques for Stringing with Beading Cable” on the back, string beads and other items in the symmetrical pattern pictured.

TIP: To avoid breakage, close the bails on the crystal pendants with your fingers.

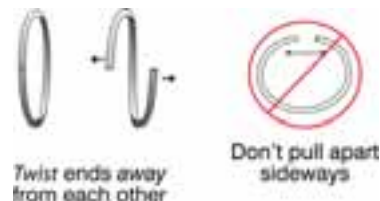
NOTE: Crimp tubes are used as spacers under the coral pendants and shell charms.



Techniques for Stringing with Beading Cable

1. Cut wire cable 4" longer than desired necklace or bracelet length. String a crimp bead onto one end of the cable and loop back through crimp bead. Try to tuck excess cable inside your end beads, otherwise trim neatly with flush cutters. Flatten crimp bead with standard round- or- flat-nose pliers. Use jump ring to attach one end of your clasp to cable.

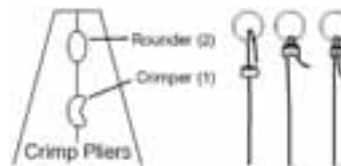
TIP: When opening and closing jump rings, twist sideways instead of "ovalling" them. This keeps their shape better, which makes them easier to close all the way. (As shown on the left.) To prevent marks on the ring use non-serrated flat-nose pliers.



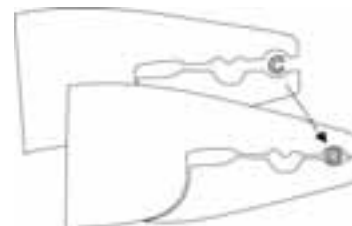
2. String desired pattern.
3. Add final crimp bead; loop cable back through your crimp like in step 1. Tuck excess cable inside end beads, otherwise trim neatly with flush cutters. Flatten crimp bead and attach other end of the clasp with a jump ring.
4. Some designs may require stringing the beads before finishing the cable ends. We recommend using Bead Stoppers™ (#69-144-06 and -16) to secure unfinished ends. When you have finished follow steps 1 and 3.

Variations:

- a. **Crimping pliers:** To make a nice rounded crimp bead, use the innermost section (1) of the pliers to crimp. Face crimp outward (as shown in example below) and use the outer section (2) of the pliers to round the bead.



- b. **Crimp covers:** Cover flattened crimps with a crimp cover. Make sure there is enough space around your crimp bead. Use section 2 (see picture above) of the crimping pliers to gently secure the cover over the bead.



- c. **Bullion:** Cut two pieces in precise equal lengths (approx. 1/2-3/4"), add one crimp tube and one piece of bullion to the end of wire cable. Loop the cable through one portion of clasp and back through the crimp tube. Pull gently until the bullion is flush against the crimp and crimp closed.



- d. **Wire protectors:** Guard wire cable from excessive wear with wire protectors. These are used the same way as bullion.

