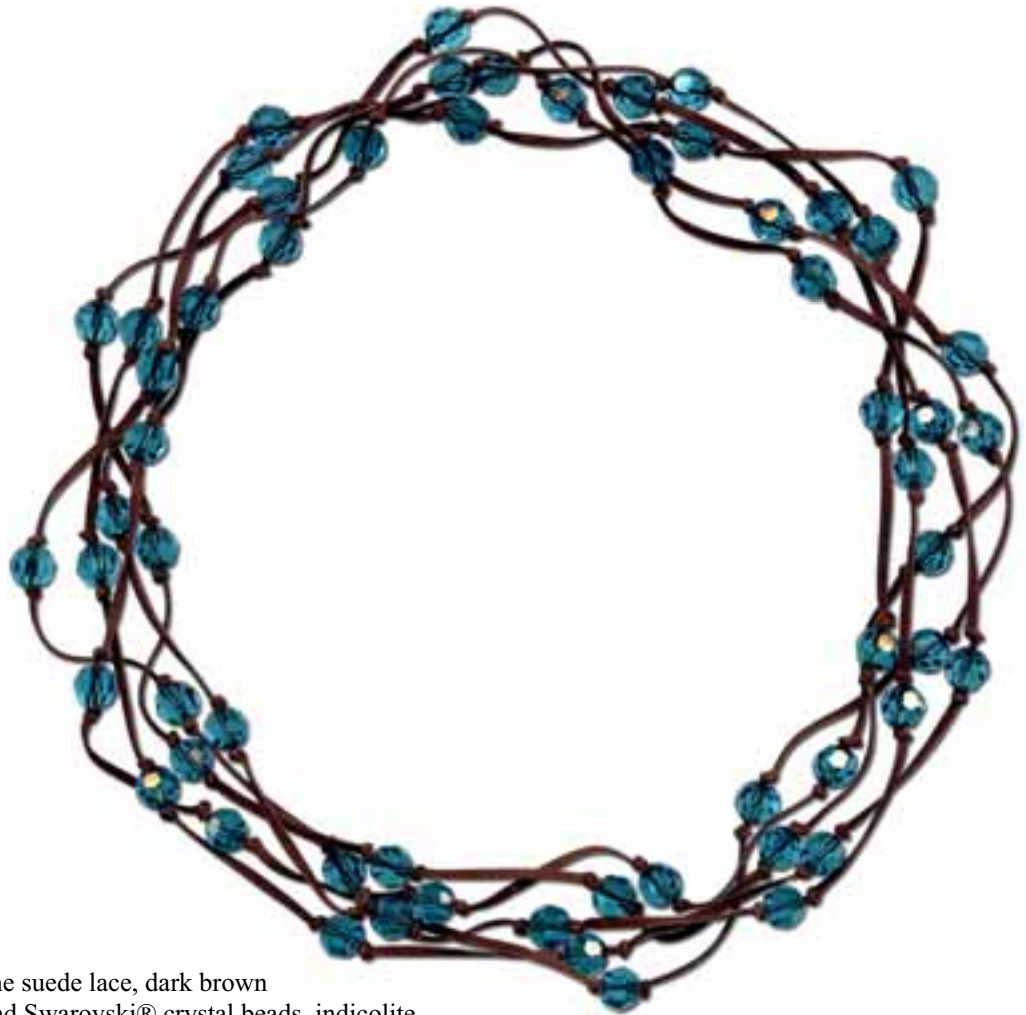


“Great Lengths” Crystal & Leather Necklace

As seen in the December 2008 issue of *Simply Beads* magazine



Created by: Mollie Valente



Suggested Materials:

<u>Qty.</u>	<u>Stock#</u>	<u>Name</u>
8 ft	61-790-03	1.5mm fine suede lace, dark brown
59	05-000-06-124	6mm round Swarovski® crystal beads, indicolite

Tools: scissors, awl (#65-801)

To make this design:

1. Cut an 8 foot piece of suede lace.
2. Make an overhand knot in the cord about one inch from the end.
3. Add a crystal to the cord, and make a second loose overhand knot.
4. Put an awl through this knot and gently pull it snug against the bead.
5. Make an overhand knot in the cord about 1.5” from the previous knot.
6. Repeat steps 3-5 until all the crystals are used.
7. At the last crystal, secure the two ends of the necklace with an overhand knot.

How to make an overhand knot:

1. Make a loop with the cording.
2. Pass the cord that’s behind the loop over the front cord and through the loop.
3. Pull to tighten.



NOTE: Knotting can be done by hand or with a cord knoter. The key to good knotting is to make sure the knot is, as close to the beads as possible, so the beads don’t move.