

# "For Love or Money" Bracelet

As seen in the Rings & Things 2007-08 wholesale catalog



Created by: Mary Morton

**Tools:** Adhesive, such as product #60-242 Bead Fix™  
Chain-nose pliers, such as product #65-330  
Flat or tapered file, such as product #96-601

<u>Qty.</u>	<u>Stock#</u>	<u>Suggested Materials</u> <u>Stock Item</u>
Ten	#44-070	I Ching coin replicas
One	#40-349-2	Disc and loop bracelet form
Eleven	#02-028-16-02	Swarovski® crystals, flat-back rhinestones
One	#06-202-10-150	Swarovski crystal heart pendants, golden shadow
One	#44-060-01	Asian coin "good luck" charm
One	#37-145-2	6mm round jump ring, yellow

## To make this design:

### 1. Choosing your pattern:

This design uses ten I Ching coin replicas, five of each side of the coin. You'll need to decide on a pleasing pattern. This bracelet pattern alternates between the numeral side, and the floral side of the coin.

### 2. Preparing the bracelet form and coins:

Because getting glue to hold can be tricky, you'll want to use your file and "prep" the metal surfaces to be glued. File each pad on the bracelet form to create texture for the glue to "grip", and one side of each coin (the side you'll glue onto the form). Also, file one side of your good luck charm, which will be the centerpiece of the bracelet. Do NOT file your rhinestone crystals.

### 3. Gluing your coins to the bracelet:

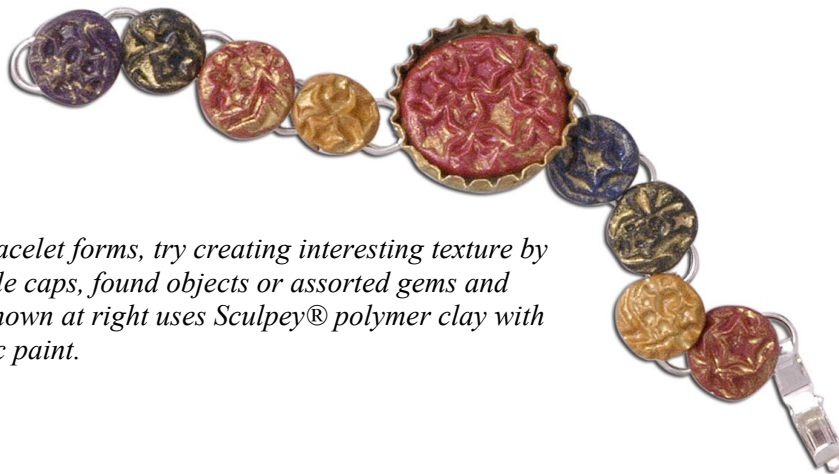
On a flat surface, lay your coins and charm "prepped" side up (the side you filed), in the order and arrangement you want them to appear on the bracelet form. Add a drop of glue to the pad, and center the pad over one coin. Hold for 2-3 seconds until glue is dry. Skipping the center pad of the bracelet (for your charm). Repeat this ten times.

### 4. Gluing your charm to the bracelet:

On a flat surface, lay your charm "prepped" side up. Make sure that you have aligned the loop portion of the charm, to fall evenly at the "bottom" of the bracelet. Add a drop of glue to the pad, and center the pad over your charm. Hold for 2-3 seconds until glue is dry. Use a jump ring to connect the crystal to the loop portion of the loop of the center charm

### 5. Adding rhinestones:

First, line ten rhinestones up on a flat surface, flat portion down. Add a drop of glue in the open square at the center of one coin. Moisten the tip of your index finger, and gently press down on one of the rhinestones to pick it up. Carefully center it over the open square and set it on the glue. Wait two to three seconds before removing your finger. Repeat on all ten coins, and your center charm.



*For a fun idea using bracelet forms, try creating interesting texture by adding clay beads, bottle caps, found objects or assorted gems and charms. The example shown at right uses Sculpey® polymer clay with sparkly layers of acrylic paint.*