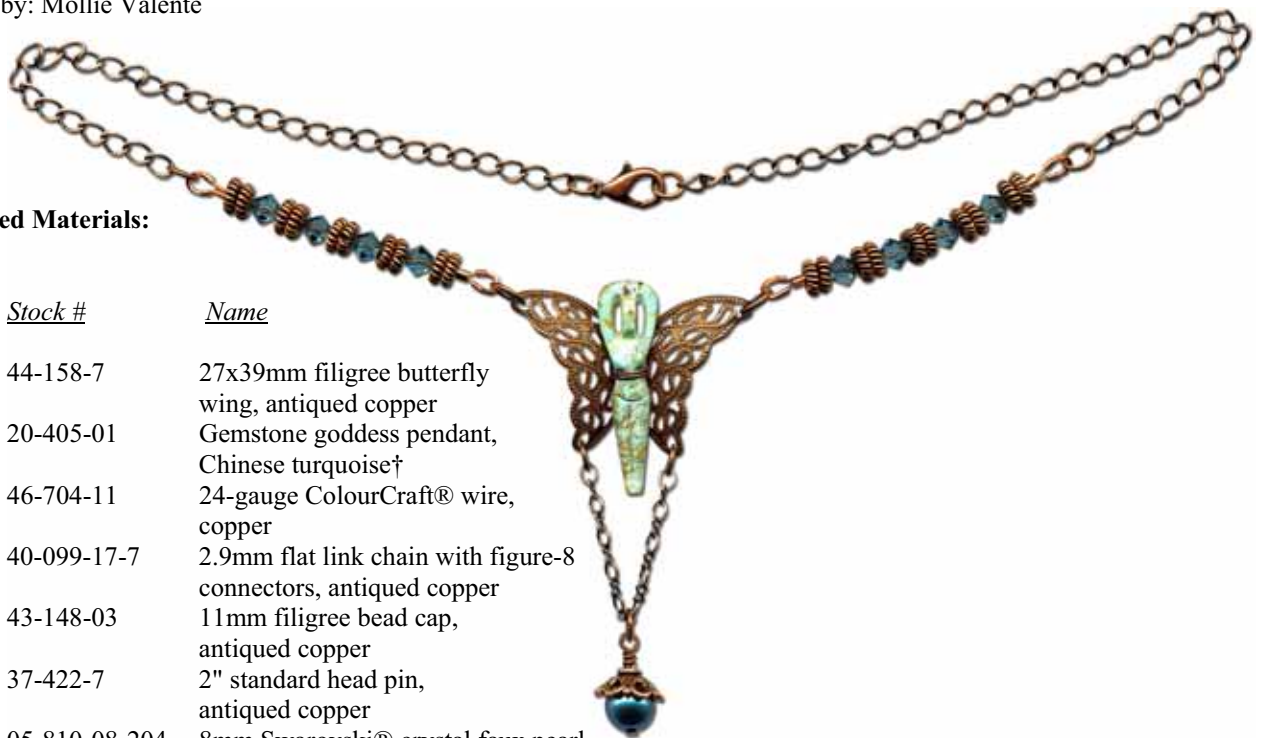


"Icarus Ascending" Necklace

As seen in the Rings & Things Wholesale Catalog 2009-10



Created by: Mollie Valente



Suggested Materials:

<u>Qty.</u>	<u>Stock #</u>	<u>Name</u>
1	44-158-7	27x39mm filigree butterfly wing, antiqued copper
1	20-405-01	Gemstone goddess pendant, Chinese turquoise†
2"	46-704-11	24-gauge ColourCraft® wire, copper
2"	40-099-17-7	2.9mm flat link chain with figure-8 connectors, antiqued copper
1	43-148-03	11mm filigree bead cap, antiqued copper
1	37-422-7	2" standard head pin, antiqued copper
1	05-810-08-204	8mm Swarovski® crystal faux pearl, Tahitian look
3	37-145-7	6mm round jump rings, antiqued copper
6	37-136-7	5m round jump rings, antiqued copper
20	26-813-117	6mm coil spacer beads, antiqued copper
8	05-301-05-52	5mm Swarovski crystal bicones, Indian sapphire
4	41-050-8	Wire Guardian™ wire protectors, copper plate
4	41-252-8	2mm crimp tubes, copper
6"	61-723-19-54	0.018" 19-strand Beadalon® stringing cable, copper satin
10"	40-099-01-7	4.2mm curb chain, antiqued copper
1	39-343-7	12mm lobster clasp, antiqued copper

Tools: crimping pliers, flat-nose pliers, round-nose pliers, chain-nose pliers, flush cutters

NOTE: † This pendant is not always available. To find another gemstone in this same shape, visit our website at www.rings-things.com and type **20-405** in the search box. Or, call us and our friendly sales staff will help you find another option.

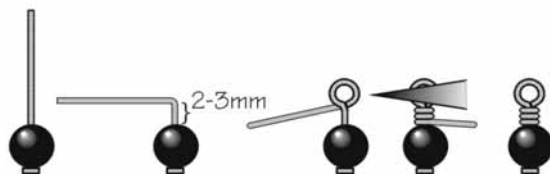
To make this design:

1. Wrap a 2" piece of wire around the goddess pendant to secure it to the filigree butterfly.
2. Use small jump rings to attach a 2" piece of chain to the bottom wings of filigree.
3. Add a pearl and bead cap to a head pin, make a wrapped loop and attach to the chain as pictured, with a large jump ring.
4. Cut two 3" pieces of Beadalon and string each with crystals and copper spacers as pictured, finishing each end with crimps and wire protectors. (See attached technique sheet for guidance.)
5. Cut two 5" pieces of curb chain, and use jump rings to connect these chains, the strung sections, the filigree pendant and the clasp, as pictured.

To make nice wire-wrapped beaded head and eye pins:

(For best results, use both chain-nose and round-nose pliers.)

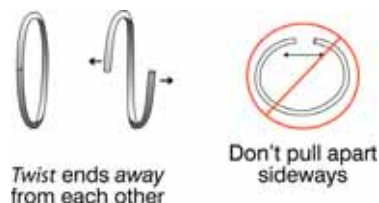
1. Use chain-nose pliers to grasp the wire just above the top of the bead.
2. Use your fingers to bend the wire sharply over the top of the pliers, at a 90° angle. You should have 2-3mm of straight wire between the bead and the bend (less for fine-gauge wire, more for heavy wire or more wraps).
3. Use round-nose pliers to grasp a spot just above the bend, and use your fingers to smoothly bend the wire all the way around the tip of the pliers. (For different sizes of loops, bend the wire around thinner or thicker portions of the pliers' tip.)
4. Now use pliers to grasp the wire firmly across the loop. Use your fingers or chain-nose pliers to carefully wrap the wire around the stem. For best control, experts recommend you break this step into a series of half wraps.
5. Trim excess with flush cutters.



Techniques for Stringing with Beading Cable

1. Cut wire cable 4" longer than desired necklace or bracelet length. String a crimp bead onto one end of the cable and loop back through crimp bead. Try to tuck excess cable inside your end beads, otherwise trim neatly with flush cutters. Flatten crimp bead with standard round- or flat-nose pliers. Use jump ring to attach one end of your clasp to cable.

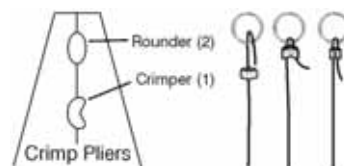
TIP: When opening and closing jump rings, twist sideways instead of "ovalling" them. This keeps their shape better, which makes them easier to close all the way. (As shown on the left.) To prevent marks on the ring use non-serrated flat-nose pliers.



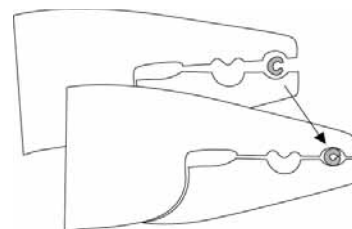
2. String desired pattern.
3. Add final crimp bead; loop cable back through your crimp like in step 1. Tuck excess cable inside end beads, otherwise trim neatly with flush cutters. Flatten crimp bead and attach other end of the clasp with a jump ring.
4. Some designs may require stringing the beads before finishing the cable ends. We recommend using Bead Stoppers™ (#69-144-06 and -16) to secure unfinished ends. When you have finished follow steps 1 and 3.

Variations:

- a. **Crimping pliers:** To make a nice rounded crimp bead, use the innermost section (1) of the pliers to crimp. Face crimp outward (as shown in example below) and use the outer section (2) of the pliers to round the bead.



- b. **Crimp covers:** Cover flattened crimps with a crimp cover. Make sure there is enough space around your crimp bead. Use section 2 (see picture above) of the crimping pliers to gently secure the cover over the bead.



- c. **Bullion:** Cut two pieces in precise equal lengths (approx. 1/2-3/4"), add one crimp tube and one piece of bullion to the end of wire cable. Loop the cable through one portion of clasp and back through the crimp tube. Pull gently until the bullion is flush against the crimp and crimp closed.



- d. **Wire protectors:** Guard wire cable from excessive wear with wire protectors. These are used the same way as bullion.

