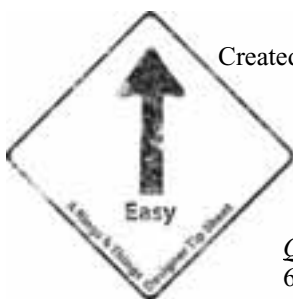


“Green Lantern” Bracelet

As seen in the 2008 Super Supplement

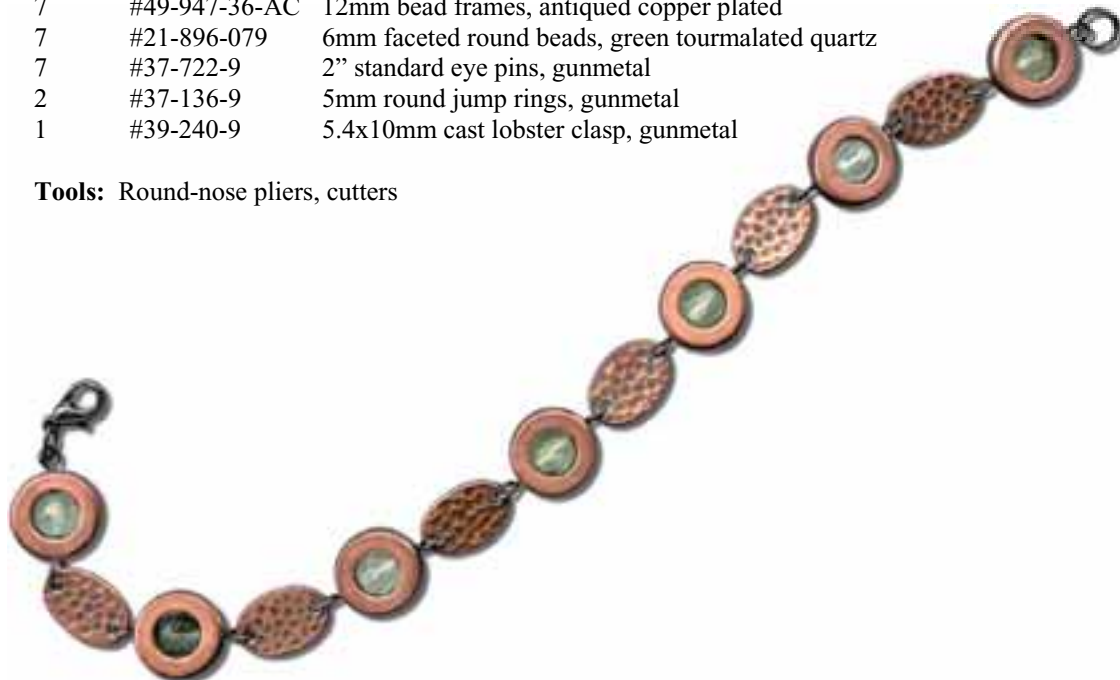


Created by: Polly Nobbs-LaRue

Suggested Materials

<u>Qty.</u>	<u>Stock</u>	<u>Name</u>
6	#49-947-46-7	12mm TierraCast™ Hammertone oval connectors, antiqued copper plated
7	#49-947-36-AC	12mm bead frames, antiqued copper plated
7	#21-896-079	6mm faceted round beads, green tourmalated quartz
7	#37-722-9	2” standard eye pins, gunmetal
2	#37-136-9	5mm round jump rings, gunmetal
1	#39-240-9	5.4x10mm cast lobster clasp, gunmetal

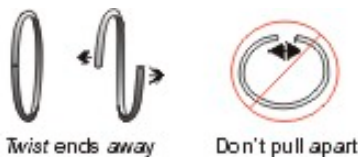
Tools: Round-nose pliers, cutters



To make this design:

1. Find the hole in a 6mm gemstone bead and align it with the hole inside a 12mm bead frame. Slide an eye pin through the bead frame and bead. Trim excess, and use round-nose pliers to make a simple loop. (See looping instructions on cover sheet.) Make sure that your loop faces the same direction as the pre-made loop on the other end. Repeat for a total of 7 framed beads.
2. Open a jump ring, and attach the lobster clasp to a bead frame.

Jump Ring Tip: When you open and close jump rings, twist sideways (as shown below). This keeps their shape better, which makes them easier to close all the way.



3. Open the loop on the other end of this bead frame, attach an oval connector, and close the loop.
4. Continue adding bead frames and connectors until you reach the desired length. As designed, this bracelet is 7¼”.
5. To finish, add a jump ring to the end without the clasp.